



BP Bohemia CZ s.r.o, Antala Staška 192 , 512 51 Lomnice n.Pop.,  
[www.bpbohemia.cz](http://www.bpbohemia.cz), [www.sloupy.eu](http://www.sloupy.eu), [obchod@bpbohemia.cz](mailto:obchod@bpbohemia.cz)

---

# PRICE LIST

composite lighting columns

**Design a safer world**

# PRICE LIST COMPOSITE LIGHTING COLUMNS

## BASICPOLE

■ SKPW - column mounted in the ground

■ SKPF - column mounted on foundation

height [m]	product symbol	top diameter [mm]	bottom diameter [mm]	standard column BASICPOLE [EUR]
3	SKPW 3,0/130/60	60	130	
	SKPF 3,0/130/60	60	130	
3	SKPW 3,0/150/60	60	150	
	SKPF 3,0/150/60	60	150	
4	SKPW 4,0/130/60	60	130	
	SKPF 4,0/130/60	60	130	
4	SKPW 4,0/150/60	60	150	
	SKPF 4,0/150/60	60	150	
5	SKPW 5,0/175/60	60	175	
	SKPF 5,0/175/60	60	175	
6	SKPW 6,0/175/60	60	175	
	SKPF 6,0/175/60	60	175	
7	SKPW 7,0/193/60	60	193	
	SKPF 7,0/193/60	60	193	
8	SKPW 8,0/193/60	60	193	
	SKPF 8,0/193/60	60	193	
9	SKPW 9,0/193/60	60	193	
	SKPF 9,0/193/60	60	193	
10	SKPW 10,0/193/60	60	193	
	SKPF 10,0/193/60	60	193	
11	SKPF 11,0/193/60	60	193	
12	SKPF 12,0/193/60	60	193	

BASICPOLE standard colours included in our offer: RAL 7032, RAL 7042

additional charge of 25% for other colours than RAL 7032, 7042 (not less than 240eur for one colour)

charge of 10% to the list price for a non-standard top diameter (other than 60mm)

# PRICE LIST COMPOSITE LIGHTING COLUMNS PASSIVEPOLE

## SKPF-P - column mounted on foundation

height [m]	product symbol	top diameter [mm]	bottom diameter [mm]	safe composite column PASSIVEPOLE [EUR]
7	SKPF-P 7,0/70NE2	60	193	
8	SKPF-P 8,0/70NE2	60	193	
9	SKPF-P 9,0/70NE2	60	193	

SAFE COMPOSITE LIGHTING COLUMNS  
COMPLY WITH NORM EN 12767

70,NE,2



PASSIVEPOLE standard colours included in our offer: RAL 7032, RAL 7042  
additional charge of 25% for other colours than RAL 7032, 7042 (not less than 240eur for one colour)  
charge of 10% to the list price for a non-standard top diameter (other than 60mm)

# PRICE LIST COMPOSITE LIGHTING COLUMNS

## DESIGNPOLE

■ SKPW-D -column mounted in the ground

■ SKPF-D - column mounted on foundation

height [m]	product symbol	top diameter [mm]	bottom diameter [mm]	lighting column without internal illumination DESIGNPOLE [EUR]
3	SKPW-D 3,0/130/60	60	130	
	SKPF-D 3,0/130/60	60	130	
3	SKPW-D 3,0/150/60	60	150	
	SKPF-D 3,0/150/60	60	150	
4	SKPW-D 4,0/130/60	60	130	
	SKPF-D 4,0/130/60	60	130	
4	SKPW-D 4,0/150/60	60	150	
	SKPF-D 4,0/150/60	60	150	
5	SKPW-D 5,0/175/60	60	175	
	SKPF-D 5,0/175/60	60	175	
6	SKPW-D 6,0/175/60	60	175	
	SKPF-D 6,0/175/60	60	175	
7	SKPW-D 7,0/193/60	60	193	
	SKPF-D 7,0/193/60	60	193	
8	SKPW-D 8,0/193/60	60	193	
	SKPF-D 8,0/193/60	60	193	
9	SKPW-D 9,0/193/60	60	193	
	SKPF-D 9,0/193/60	60	193	
10	SKPW-D 10,0/193/60	60	193	
	SKPF-D 10,0/193/60	60	193	
11	SKPF-D 11,0/193/60	60	193	
12	SKPF-D 12,0/193/60	60	193	
internal illumination (extra charge)				

DESIGNPOLE patterns in standard offer:



Birch Candy Wood Clover

charge of 10% to the list price for a non-standard top diameter (other than 60mm)

# PRICE LIST COMPOSITE COLUMNS

## SMARTPOLE CHARGER

■ SKPW-EV - column mounted in the ground

■ SKPF-EV - column mounted on foundation

height [m]	product symbol	top diameter [mm]	bottom diameter [mm]	SMARTPOLE CHARGER [EUR]
3	SKPW-EV 3,0/150/60	60	150	
	SKPF-EV 3,0/150/60	60	150	
4	SKPW-EV 4,0/150/60	60	150	
	SKPF-EV 4,0/150/60	60	150	
5	SKPW-EV 5,0/175/60	60	175	
	SKPF-EV 5,0/175/60	60	175	
6	SKPW-EV 6,0/175/60	60	175	
	SKPF-EV 6,0/175/60	60	175	
7	SKPW-EV 7,0/193/60	60	193	
	SKPF-EV 7,0/193/60	60	193	
8	SKPW-EV 8,0/193/60	60	193	
	SKPF-EV 8,0/193/60	60	193	
9	SKPW-EV 9,0/193/60	60	193	
	SKPF-EV 9,0/193/60	60	193	
10	SKPW-EV 10,0/193/60	60	193	
	SKPF-EV 10,0/193/60	60	193	
11	SKPF-EV 11,0/193/60	60	193	
12	SKPF-EV 12,0/193/60	60	193	

SMARTPOLE CHARGER standard colours: RAL 7035, RAL 7042

additional charge of 25% for other colours than RAL 7035, 7042 (not less than 240 eur for one colour)

charge of 10% to the list price for a non-standard top diameter (other than 60mm)

# PRICE LIST COMPOSITE LIGHTING COLUMNS

## EASYPOLE

■ SKPW-L - column mounted in the ground

■ SKPF-L - column mounted on foundation

### STANDARD version

height [m]	product symbol	top diameter [mm]	bottom diameter [mm]	hinged lighting column EASYPOLE STANDARD [EUR]
5	SKPW-LS 5,0/175/60	60	175	
	SKPF-LS 5,0/175/60	60	175	
6	SKPW-LS 6,0/175/60	60	175	
	SKPF-LS 6,0/175/60	60	175	
7	SKPW-LS 7,0/193/60	60	193	
	SKPF-LS 7,0/193/60	60	193	
8	SKPW-LS 8,0/193/60	60	193	
	SKPF-LS 8,0/193/60	60	193	
9	SKPW-LS 9,0/193/60	60	193	
	SKPF-LS 9,0/193/60	60	193	

### PREMIUM version

height [m]	product symbol	top diameter [mm]	bottom diameter [mm]	hinged lighting column EASYPOLE PREMIUM [EUR]
5	SKPW-LP 5,0/175/60	60	175	
	SKPF-LP 5,0/175/60	60	175	
6	SKPW-LP 6,0/175/60	60	175	
	SKPF-LP 6,0/175/60	60	175	
7	SKPW-LP 7,0/193/60	60	193	
	SKPF-LP 7,0/193/60	60	193	
8	SKPW-LP 8,0/193/60	60	193	
	SKPF-LP 8,0/193/60	60	193	
9	SKPW-LP 9,0/193/60	60	193	
	SKPF-LP 9,0/193/60	60	193	

EASYPOLE standard colours included in our offer: RAL 7032, RAL 7042  
 additional charge of 25% for other colours than RAL 7032, 7042 (not less than 240eur for one colour)  
 charge of 10% to the list price for a non-standard top diameter (other than 60mm)

# PRICE LIST COMPOSITE LIGHTING COLUMNS SMARTPOLE CROSSING

■ SKPW - column mounted in the ground

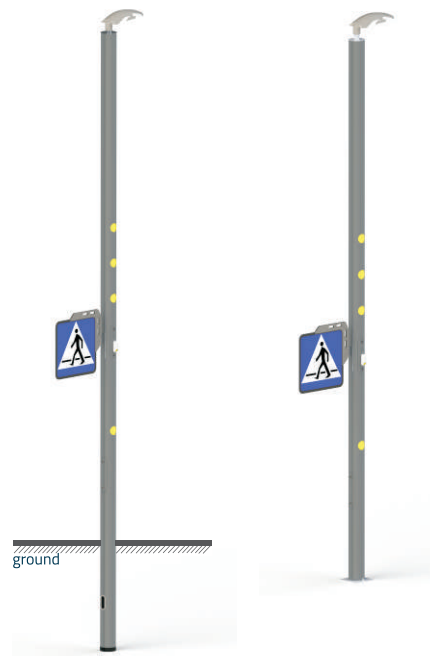
■ SKPF - column mounted on foundation

## version with LUMINAIRE

height [m]	product symbol	active pedestrian crossing SMARTPOLE CROSSING [EUR]
6	SKPW-SCO 6,0/175/60	
	SKPF-SCO 6,0/175/60	

### Active pedestrian crossing SMARTPOLE CROSSING SCO consists of 2 poles equipped with:

- cylindrical poles 6m (above the ground), pole diameter 175mm
- luminaire with assymetrical light distribution
- 9 flashing lights installed inside the pole
- internally illuminated road sign D-6
- motion sensor
- radio communication between the pole
- loudspeaker (installed inside the pole)



## version with SOLAR PANEL

height [m]	product symbol	active pedestrian crossing SMARTPOLE CROSSING [EUR]
6	SKPW-SCP 6,0/175/60	individually priced
	SKPF-SCP 6,0/175/60	individually priced

### Active pedestrian crossing SMARTPOLE CROSSING SCP consists of 2 poles equipped with:

- cylindrical poles 6m (above the ground), pole diameter 175mm
- solar panel 50W
- 9 flashing lights installed inside the pole
- internally illuminated road sign D-6
- motion sensor
- radio communication between the poles
- loudspeaker (installed inside the pole)
- batteries



SMARTPOLE CROSSING standard colour included in our offer: RAL 7016  
 additional charge of 25% for other colours than RAL 7016 (not less than 240eur for one colour)  
 charge of 10% to the list price for a non-standard top diameter (other than 60mm)

# PRICE LIST COMPOSITE LIGHTING COLUMNS DECORPOLE

## columns with stylised composite base

■ SKPW-S - column mounted in the ground

■ SKPF-S - column mounted on foundation

height [m]	product symbol	top diameter [mm]	bottom diameter [mm]	composite column DECORPOLE [EUR]
3	SKPW-S 3,0/175/60	60	130	
	SKPF-S 3,0/175/60	60	130	
4	SKPW-S 4,0/175/60	60	130	
	SKPF-S 4,0/175/60	60	130	
5	SKPW-S 5,0/175/60	60	130	
	SKPF-S 5,0/175/60	60	130	

minimum order quantity: 30 pieces  
individually priced for lower quantity

DECORPOLE standard colour included in our offer: RAL 7016

additional charge of 25% for other colours than RAL 7016 (not less than 240eur for one colour)

charge of 10% to the list price for a non-standard top diameter (other than 60mm)

# PRICE LIST COMPOSITE LIGHTING COLUMNS SMART DEVICES

every our composite lighting column can be equipped  
with the following SMART devices

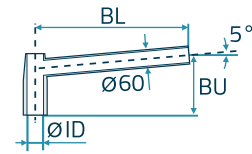
SMART devices	extra charge to the column price [EUR]
bluetooth loudspeaker	
socket for charging electric bikes	
inductive charger for mobile phones with USB socket	
WiFi	individually priced



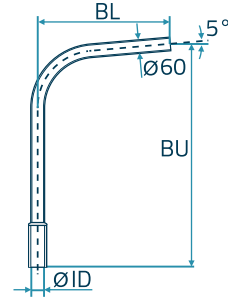
# PRICE LIST COMPOSITE LIGHTING COLUMN ALUMINIUM BRACKETS

## SINGLE BRACKET (ONE SIDED) - GROUP WJ

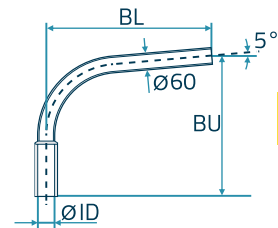
	product symbol	BL [mm]	ID [mm]	BU [mm]	Price [EUR]
<b>WJ1</b>	WJ1/60/5/500	500	60	249	
	WJ1/60/5/1000	1000	60	249	
	WJ1/60/5/1500	1500	60	293	
<b>WJ2</b>	WJ2/60/5/500	500	60	1000	
	WJ2/60/5/1000	1000	60	1000	
	WJ2/60/5/1500	1500	60	1000	
<b>WJ3</b>	WJ3/60/5/500	500	60	500	
	WJ3/60/5/1000	1000	60	500	
	WJ3/60/5/1500	1500	60	500	



**WJ1**



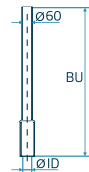
**WJ2**



**WJ3**

## SINGLE BRACKET (VERTICAL) - GROUP WP

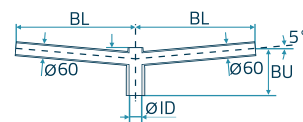
	product symbol	ID [mm]	BU [mm]	Price [EUR]
<b>WP</b>	WP/60/1000	60	1000	



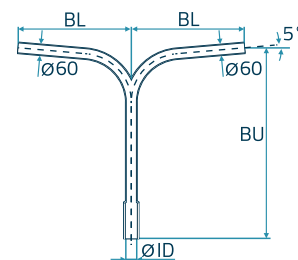
**WP**

## DOUBLE BRACKET (TWO SIDED) - GROUP WD

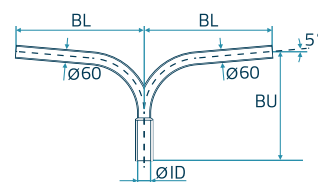
	product symbol	BL [mm]	ID [mm]	BU [mm]	Price [EUR]
<b>WD1</b>	WD1/60/5/500	500	60	249	
	WD1/60/5/1000	1000	60	249	
	WD1/60/5/1500	1500	60	293	
<b>WD2</b>	WD2/60/5/500	500	60	1000	
	WD2/60/5/1000	1000	60	1000	
	WD2/60/5/1500	1500	60	1000	
<b>WD3</b>	WD3/60/5/500	500	60	500	
	WD3/60/5/1000	1000	60	500	
	WD3/60/5/1500	1500	60	500	



**WD1**



**WD2**



**WD3**

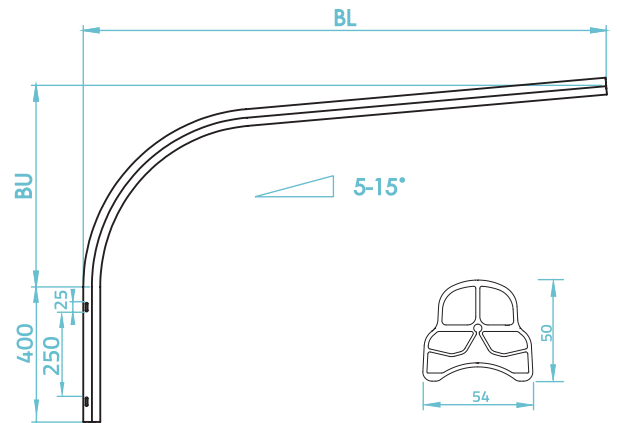
extra charge of 50% to the price for each additional bracket arm  
 extra charge of 15% to the price for a bracket with an angle different than 5°  
 extra charge of 15% to the price for powder coating of aluminium brackets according to RAL palette  
 extra charge of 15 EUR to the double bracket with an angle other than 180° between arms

# PRICE LIST COMPOSITE LIGHTING COLUMNS ALUMINIUM BRACKETS AND ACCESSORIES

## ALUMINIUM BRACKET WADER

	product symbol	BL [mm]	BU [mm]	Price [EUR]
<b>WADER 500</b>	wader 500/500	500	500	
	wader 500/1000	1000	500	
	wader 500/1500	1500	500	
	wader 500/2000	2000	500	
	wader 500/2500	2500	500	
	wader 500/3000	3000	500	
<b>WADER 1000</b>	wader 1000/500	500	1000	
	wader 1000/1000	1000	1000	
	wader 1000/1500	1500	1000	
	wader 1000/2000	2000	1000	
	wader 1000/2500	2500	1000	
	wader 1000/3000	3000	1000	
<b>WADER 1500</b>	wader 1500/500	500	1500	
	wader 1500/1000	1000	1500	
	wader 1500/1500	1500	1500	
	wader 1500/2000	2000	1500	
	wader 1500/2500	2500	1500	
	wader 1500/3000	3000	1500	

	product symbol	BL [mm]	BU [mm]	Price [EUR]
<b>WADER 2000</b>	wader 2000/500	500	2000	
	wader 2000/1000	1000	2000	
	wader 2000/1500	1500	2000	
	wader 2000/2000	2000	2000	
	wader 2000/2500	2500	2000	
	wader 2000/3000	3000	2000	



## SETS OF CABLE JOINTS - IZK

product symbol	Price [EUR]
cable joints for one luminaire (single bracket or without a bracket)	
cable joints for two luminaires (double bracket)	

## PRE-CAST CONCRETE FOUNDATION

product symbol	bolt spacing [mm]	Price [EUR]
F100/30	200x200	
F120/43	300x300	

## PROFILE FOR CABLE JOINT

Profile for Cable Joint	Price [EUR]
PROFILE FOR CABLE JOINT	